

ADVANCED FINANCIAL ANALYST

A Microsoft Excel Reporting Tool

Advanced Financial Analyst is a state of the art reporting tool that provides access to your general ledger data directly from Microsoft Excel, the most popular spreadsheet in the world.

There are two primary components to Advanced Financial Analyst: Author and Analyst. Use Author to design report templates. Begin with an existing template or start from scratch. Place entire rows and columns of information in the worksheet with user-friendly wizards. Build in filters that allow users to specify report criteria when viewing the report. Add drill down capability to a report by simply checking a box. Or, create a data source to be used in conjunction with Excel pivot tables. Author makes template creation easy thanks to innovative programming that was done using 100% Microsoft tools.

Use Analyst to view reports using your templates. Simply open the template, select any filter criteria and run it. The report is automatically generated with new data from the selected period. This means your time is spent analyzing data, not entering it. And, because your data is in Excel, you have a full complement of tools available to you. Perform 'what-if' analyses. Create charts and graphs. Or, distribute the information in native Excel, HTML or text formats. It's all fast and easy because your data is in Excel.

Current Period				Year-to-date					
Actuals	Budget	Variance	Ratio	Actual	Budget	Variance	Ratio		
Revenue									
776	\$ 219,749.31	\$ 211,878.00	\$ 7,871.31	3.58%	Master sales	\$ 1,025,697.60	\$ 1,023,979.00	\$ 1,718.60	0.17%
776	142,898.31	254,812.00	(121,914.00)	(85.32%)	Telephone sales	687,369.77	1,256,221.00	(568,162.23)	(45.22%)
777	132,085.31	-	132,085.31	100.00%	Catalog sales	615,595.96	-	615,595.96	100.00%
778	214,288.94	186,233.00	28,055.94	12.92%	Consulting sales	1,000,214.47	1,001,498.00	(1,284.53)	(0.13%)
779	799,921.17	875,924.00	(75,992.77)	(8.63%)	Total Revenue	3,308,871.96	3,281,699.00	27,172.96	0.84%
Direct Expense									
801	65,155.54	140,580.00	(75,424.46)	(53.66%)	Direct material	304,422.27	635,842.00	(331,419.73)	(52.14%)
802	83,555.83	183,187.00	(99,631.17)	(54.38%)	Direct labor	358,312.56	793,163.00	(434,850.44)	(54.82%)
803	49,451.97	98,678.00	(49,226.03)	(49.55%)	Other direct cost	221,169.31	450,968.00	(229,798.69)	(51.19%)
804	29,621.06	51,556.00	(21,934.94)	(42.55%)	Sales and marketing	137,799.59	263,615.00	(125,815.41)	(47.72%)
805	227,236.50	474,009.00	(246,772.50)	(52.06%)	Total Direct	1,061,262.07	2,151,388.00	(1,090,125.93)	(50.67%)
806	481,734.67	201,816.00	279,918.67	138.70%	Gross Margin	2,247,609.89	1,130,311.00	1,117,298.89	98.16%
807	130,214.14	33,505.00	96,709.14	(73.82%)	Total indirect	699,252.65	156,624.00	542,628.65	(34.62%)
808	351,420.53	168,347.00	183,073.53	(52.11%)	Operating Income (Loss)	1,638,357.24	873,687.00	764,670.24	87.57%
809	18,211.60	12,250.00	5,961.60	(48.66%)	Total Other	122,189.40	28,311.00	93,878.40	(33.14%)
810	187,432.66	185,640.00	1,792.66	(0.96%)	Net Income (Loss) Before Taxes	1,686,167.84	1,056,998.00	629,169.84	(59.64%)
815	21,851.80	5,530.00	16,321.80	(295.13%)	Total Income Taxes	35,475.96	25,844.00	9,631.96	(37.26%)
816	336,380.88	180,122.00	156,258.88	(86.74%)	Net Income (Loss)	\$ 1,587,872.01	\$ 1,031,014.00	\$ 556,858.01	(53.95%)

Financial statements are presented directly in MS Excel, where they can be further manipulated, published to an intranet, emailed to others or included in MS Word documents.

Additional Advanced Financial Analyst Features:

Types of Reports You Can Create

- Balance Sheet
- Income Statement
- Expense Summary
- Revenue Analysis
- Trial Balance
- GL Journal
- Trend Report
- ... and many more!

Compatibility

- Office 2000
- Office XP
- Office 2003

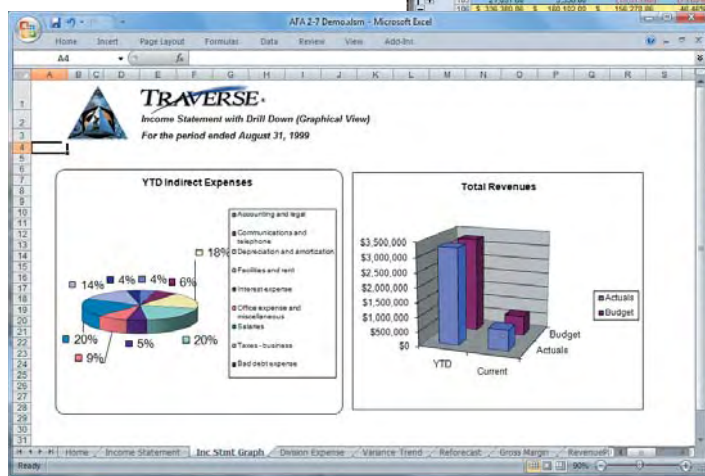
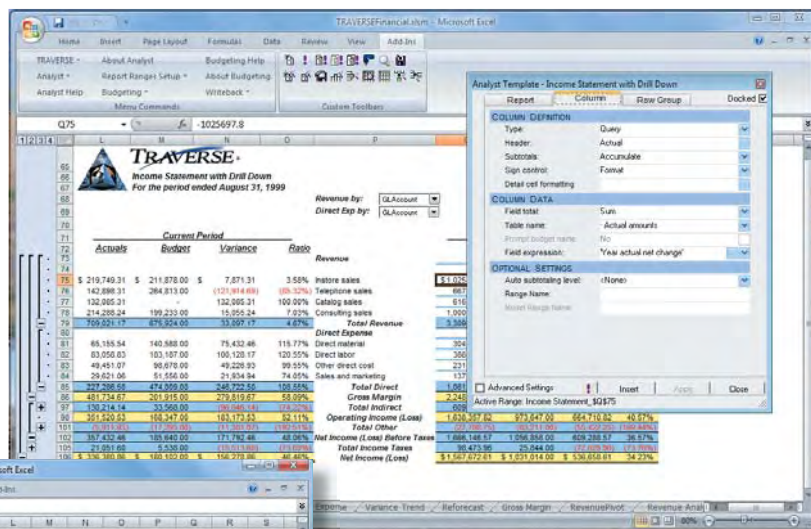
Distribution

- Excel template (for viewers with Analyst)
- Excel file (for viewers with Excel)
- HTML (for viewers with a browser)
- Text (to e-mail as straight text)

Drilldown Capabilities

- GL accounts
- Journal entries
- Summary balances
- Detail balances

Wizards guide you through modifying columns in Author.



Analyze your data using charts in MS Excel.