



POINT OF SALE

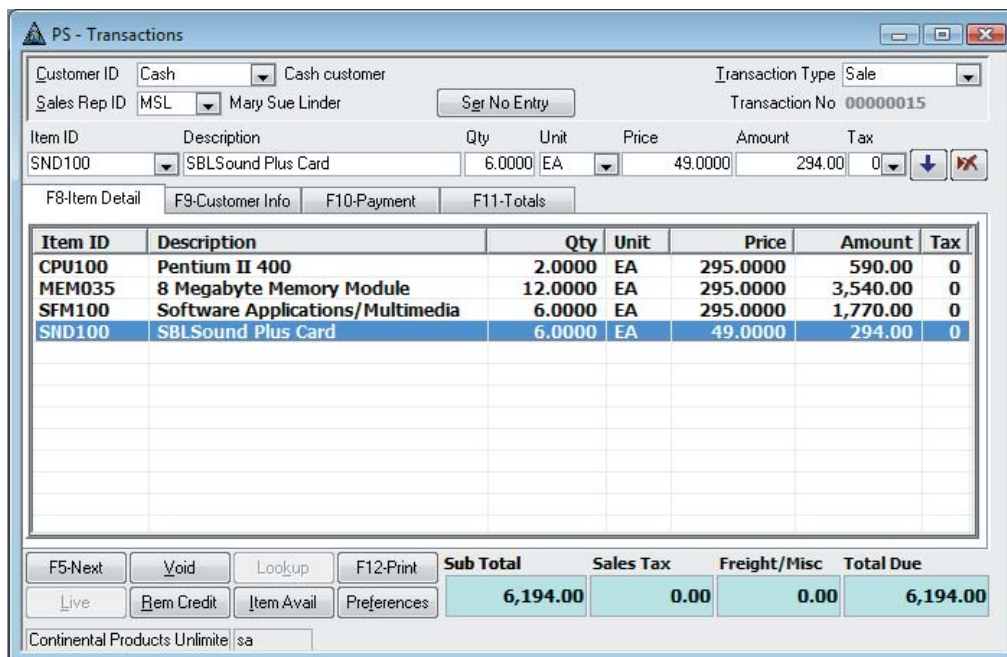
POINT OF SALE

Streamlining your company's sales and inventory

TRAVERSE Point of Sale (POS) is a computerized retail management system that combines a user-friendly interface with exceptional speed and flexibility. It is integrated with TRAVERSE Sales Order for a fast, efficient means of entering sales and controlling inventory. TRAVERSE POS enables your computer to operate as a cash register, offering far more capabilities than a traditional register. And, it's much easier to use.

TRAVERSE POS is the perfect solution to improve the profitability of your business. It provides streamlined transaction entry (sales, returns, layaways and quotes) and the ability to quickly locate information through robust reporting and lookup functions. You'll be able to capture complete transaction details at the "point of sale"; transaction history and real-time database records are stored indefinitely, so your valuable data is always just a keystroke away.

When trying to locate a customer or an inventory item, simply type the first few letters of the name you are trying to locate. TRAVERSE POS instantly brings you to the correct place in the list, even if you have thousands of names to search through. Inventory items can be found by scanning with a barcode reader or by typing in the description. TRAVERSE Point of Sale also lets you look up your inventory by typing the vendor SKU, product code, or a "preferred name."



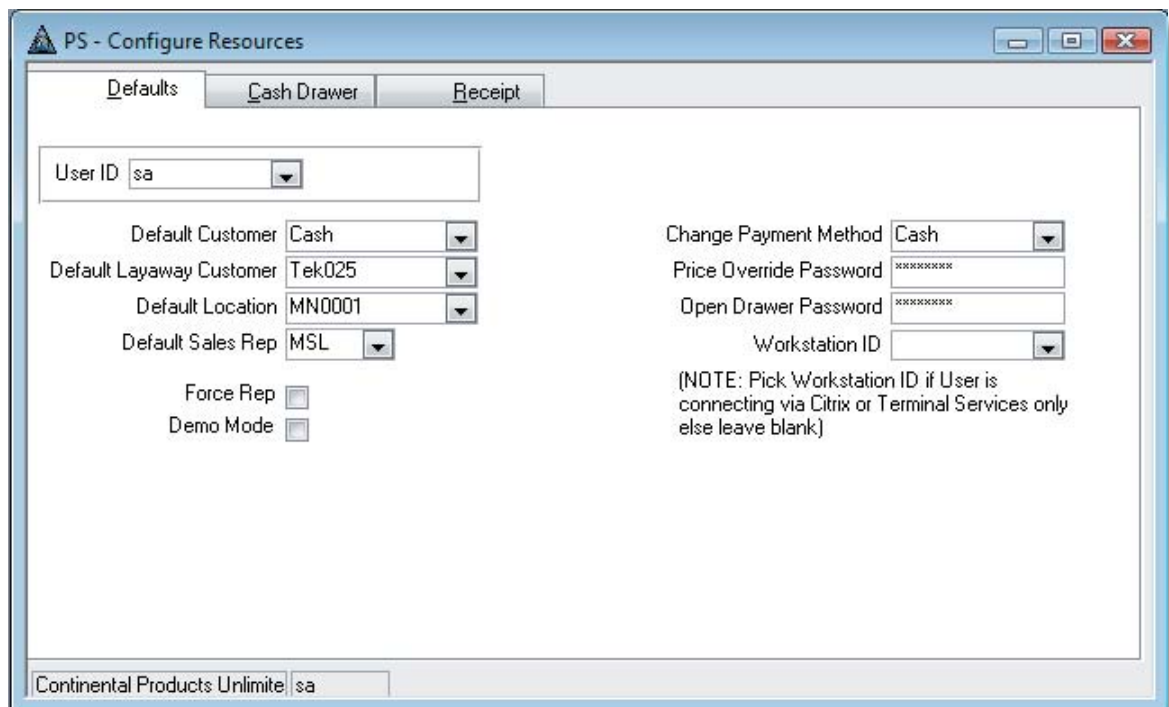
*You can scan or enter the inventory numbers for the items you are selling.
Enter the customer name and payment method for the transaction.*



900 Wind River Lane, Suite 102, Gaithersburg, MD 20878
Phone 1-800-451-7447 or visit www.osasonline.com

Additional Point of Sale Features:

- function key driven
- easy learning curve
- cash drawer opens automatically following the payment of a transaction
- prints invoices and/or receipts
- password protected price change
- tracks voided transactions
- ability to create invoices, returns, layaways, and quotes from the same menu
- item lookups from anywhere in the POS screen
- can be customized to fit the individual retailer's needs
- consistent, simple-to-use screens combined with an underlying processing power
- end of day balancing journal that prints by workstation (POS Journal)
- multiple pricing levels
- easy cash drawer reconciliation
- unlimited entry of inventory items and customers
- integrates with all popular barcode readers and electronic cash drawers
- promotional pricing between two dates
- multiple tax rates
- ability to check stock status while invoicing
- precise and quick processing of returns



The screenshot shows a window titled "PS - Configure Resources" with three tabs: "Defaults", "Cash Drawer", and "Receipt". The "Defaults" tab is active. The window contains several configuration fields:

- User ID: sa
- Default Customer: Cash
- Default Layaway Customer: Tek025
- Default Location: MN0001
- Default Sales Rep: MSL
- Force Rep:
- Demo Mode:
- Change Payment Method: Cash
- Price Override Password: [masked]
- Open Drawer Password: [masked]
- Workstation ID: [dropdown]

A note at the bottom right of the window reads: "(NOTE: Pick Workstation ID if User is connecting via Citrix or Terminal Services only else leave blank)". The status bar at the bottom of the window shows "Continental Products Unlimite | sa".

TRAVERSE POS allows you to set up defaults for each user.